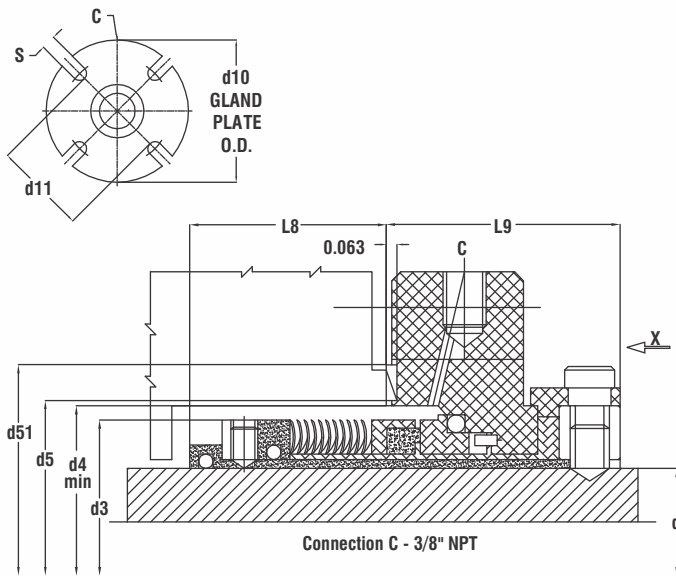


RSCS1WBC

WELDED BELLOWS CARTRIDGE



d	d3	d4	d5	d51	d10	d11	L8	L9	S
1.000	1.595	1.625	1.771	2.106	4.000	2.224	0.952	1.460	0.551
1.125	1.708	1.750	1.909	2.830	4.125	2.421	0.952	1.460	0.551
1.250	1.865	2.000	2.037	2.362	4.250	2.500	0.952	1.460	0.551
1.375	1.950	2.000	2.145	2.593	4.250	2.696	0.952	1.460	0.551
1.500	2.172	2.250	2.368	2.736	5.000	2.815	0.952	1.460	0.551
1.625	2.283	2.375	2.460	2.854	4.500	2.972	0.952	1.460	0.551
1.750	2.401	2.500	2.578	2.992	5.000	3.062	0.952	1.460	0.551
1.875	2.537	2.625	2.755	3.110	5.250	3.188	0.952	1.460	0.551
2.000	2.670	2.750	2.834	3.267	5.500	3.307	0.952	1.460	0.551
2.125	2.795	2.875	2.952	3.386	5.750	3.503	0.952	1.460	0.709
2.250	2.913	3.000	3.110	3.504	6.500	3.622	0.952	1.460	0.709
2.375	3.037	3.125	3.228	3.700	6.500	3.818	0.952	1.460	0.709
2.500	3.288	3.375	3.464	3.858	6.500	3.976	1.311	1.622	0.709
2.625	3.410	3.500	3.543	3.937	7.000	4.055	1.311	1.622	0.709
2.750	3.562	3.625	3.780	4.252	7.000	4.370	1.311	1.622	0.709



FEATURES & BENEFITS:

- ▶ Easy cartridge installation
- ▶ Static "O" rings - No shaft fretting
- ▶ Universal gland design conforms to most common bolt circles
- ▶ Fits all ANSI pumps without modification
- ▶ Self cleaning plates minimizes clogging
- ▶ Face lubricating enhanced by even face loading
- ▶ Balanced design - 300 PSI without modification
- ▶ Fits into narrow cross section pumps

OPERATING LIMITS:

- ▶ Pressure: Upto 300 PSI/20 Bar
- ▶ Temperature: From -100°F to 400°F
-73°C to 205°C (depending on elastomer)

STANDARD MATERIALS OF CONSTRUCTION:

- ▶ **Faces:**
 - ▶ Carbon, Tungsten Carbide, Silicon Carbide, Anitmony Carbon
- ▶ **Elastomers:**
 - ▶ Viton*, Buna, PTFE, Neoprene, EPR, Kalrez*, FEP, AFLAS*, Teflon Jacketed Viton
- ▶ **Metallurgy:**
 - ▶ 316 SS, Hastelloy C, AM 350, Titanium, Alloy 20